

F.T.T - 11

Northern Myanmar Adventure Tour

Yangon – Putao - Yangon

(06days/05nights)

Day 01 Arrive Yangon

(-/-/D)



Arrive at Yangon International Airport, welcome by our Tour Guide. Transfer to Hotel & check in. Sightseeing to the prime downtown location the center of Yangon. After that, sightseeing Sunset at the Shwedagone Pagoda which is one of the world's most spectacular religious monuments and the golden dome of *Shwedagon Pagoda* rises 98 meters above its base and is covered with 60 tons of pure gold. *Overnight at Sedona Hotel.*

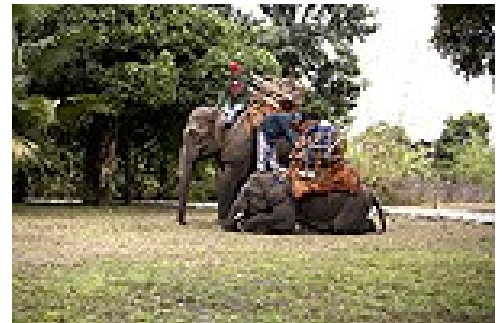
Day 02 Yangon - Putao by flight

(B/L/D)

After breakfast, transfer to airport and fly to Putao. Arrival at Putao Airport and transfer to Malikha Lodge in time for lunch.

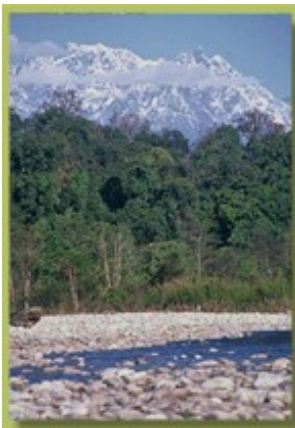
Yegyawdi village and Nam Lang River Elephant Trek - Half Day

We may offer an elephant excursion after lunch once our two elephants have returned from a night of foraging in the jungle. Setting off from the Main Lodge, the elephants take you through the fast flowing clear waters of the Nam Lang River and up through the terraced rice fields to the village of Yegyawdi opposite our lodge or downstream along the banks for the Nam Lang River, before a final river crossing brings you back to the lodge. By prior arrangement there is the opportunity to view the elephants being washed by the mahouts. Dinner and drinks at the main lodge in front of our open fireplaces and accommodation at Malikha Lodge, Putao.



Day 03 Malikha Rafting and Cruise - Full Day

(B/L/D)



After breakfast. This full day excursion combines gentle rafting from Mulashidi suspension bridge by the Lodge down the Nam Lang to join Malikha river, through its scenic river gorge to our picnic spot. A picnic lunch is prepared in a spectacular riverside beach inside the gorge. From there we venture downstream in Malikha Lodge's own long boat on the Malikha River through forested hills and past white river beaches, where villagers may often be seen panning for gold until our arrival at the picturesque village of Manchanbaw. After a short stroll through the village return by vehicle to Malikha Lodge in time for sunset. Dinner and accommodation at Malikha Lodge, Putao.



After a short stroll through the village return by vehicle to Malikha Lodge in time for sunset. Dinner and accommodation at Malikha Lodge, Putao.



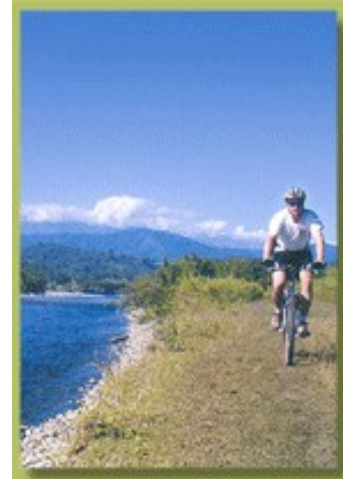
Day 04 Cultural and Traditional visits

(B/L/D)

Breakfast. Guests at Malikha Lodge will have the opportunity to experience and learn about life in Mulashidi village and the Putao Valley and view some of the cottage industries. For early birds there is also the chance to visit the Putao market, to try a steaming bowl of Shan noodle soup for breakfast and to practice your haggling skills over spectacular Rawang village headman woven hats, colourful longhis and fine baskets. Lunch at Malikha Lodge.

Trek or Bike Adventure Half Day

In the afternoon, we have many bike and trek routes to follow with our guides from the Lodge - we discuss and arrange these upon our guests' arrival dependent on their level of fitness and special interests. Returning to the Lodge in the evening to a huge, hot bath in our fabulous teak bathtubs and/or a massage from our own spa staff in Bungalow is a very welcome treat. The last evening we invite our guests to a hosted group dinner in the Main Lodge. Accommodation at Malikha Lodge, Putao.



Day 05 Putao - Yangon by flight

(B/L/D)



After a final leisurely breakfast at Malikha Lodge, check out and transfer to Putao Airport and fly back to Yangon. Transfer to hotel. Visit to the **Bogyoke** (Scott's) Market, with hundreds of stores. Overnight at Sedona Hotel.



Day 06 Departure

(B/-/-)

After breakfast, time at leisure to pursue individual interests until your transfer to the airport. Our driver will pick you up the hotel and accompany you to the airport. Departure from Yangon.



Packages include;

- » Hotel accommodation twin sharing room with daily breakfast
- » Transfer & transportation during tour
- » English speaking station guide service
- » Meal as per mention itinerary
- » Permission fee
- » Domestic air ticket
- » Welcome drink at hotel

Packages exclude;

- » Visa fees
- » International air fare
- » Beverages
- » All sightseeing admission fee
- » International air port tax (US\$ 10 per person)
- » Personal expense such as camera fee, tips etc...
- » Non specific expenditure

Please kindly be noticed you need to pre-book 1 month ahead before you arrive to Yangon. Because this region need "special permission" and it will take 1 month.

UPDATED: FT 100410