



# PLUSH PODS



EW12 Bugis

★★★★★  
 tripadvisor

www.plush-pods.com

2, Tan Quee Lan St, Singapore 188091

*Located in the prime BUGIS district in Downtown Singapore, Plush Pods is the best located hostel in Singapore. Ultimately the best place to begin your Singapore journey!*

Walking distance to: | Bugis Street | Kampong Glam | Suntec City | The Esplanade | Gardens by the Bay | Singapore Flyer | Esplanade Marina Bay Sands | Raffles City Convention Centre | Merlion Park | Financial District | Old Civic District | Direct tour bus to Singapore Zoo, River Safari, Night Safari |

15min away: | Orchard Road | Chinatown | Sentosa | SEA Aquarium | Universal Studios | Sports Hub | Little India |

- **Best Premium Hostel in Downtown Singapore!**
- **Best location, only 1-minute walk from Bugis MRT station, Downtown Line!**
- **Best choice of room types to cater for all types of budgets and needs.**

Plush Pods Room rates in SGD Per Room Per night	
Room Types- Dorms	Rack rate
16- 20 Beds Mixed Dorm	\$37
8-10 Beds Female Dorm Ensuite	\$45
10 Beds Mixed Dorm	\$47
Standard Double Pod with shared Bath	\$73
Superior Double Pod with private Bath	\$93
Room Types- Private Rooms	Rack rate
Standard Room	\$128
Deluxe Room	\$158
Premium Room	\$178
Family Room- 4 pax	\$218
Tatami Room- 5 pax	\$178
Tatami Room -8 pax	\$258

(PP:28/05/15)



IT BEGINS HERE  
PLUSH PODS

## PREMIUM PODS

Our Pods are newly renovated, self-contained with screen walls between pods and closed up blinds for complete privacy.

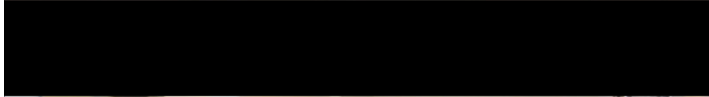
Each pod is designated with own reading lights, power sockets and lockable luggage space. Each cabin comes with security digital lock for a safe and good night rest.

Cabin types we have choice of 8, 14 and 20 pods in a cabin. Mixed and Ladies only cabin to suit your needs and preference.

Rates inclusive of free fast speed WIFI, linen, blanket, simple breakfast and free use of lounge facilities.

[www.plush-pods.com](http://www.plush-pods.com)





[www.plush-pods.com](http://www.plush-pods.com)



IT BEGINS HERE  
PLUSH PODS

## Standard Room Single/Twin Sharing

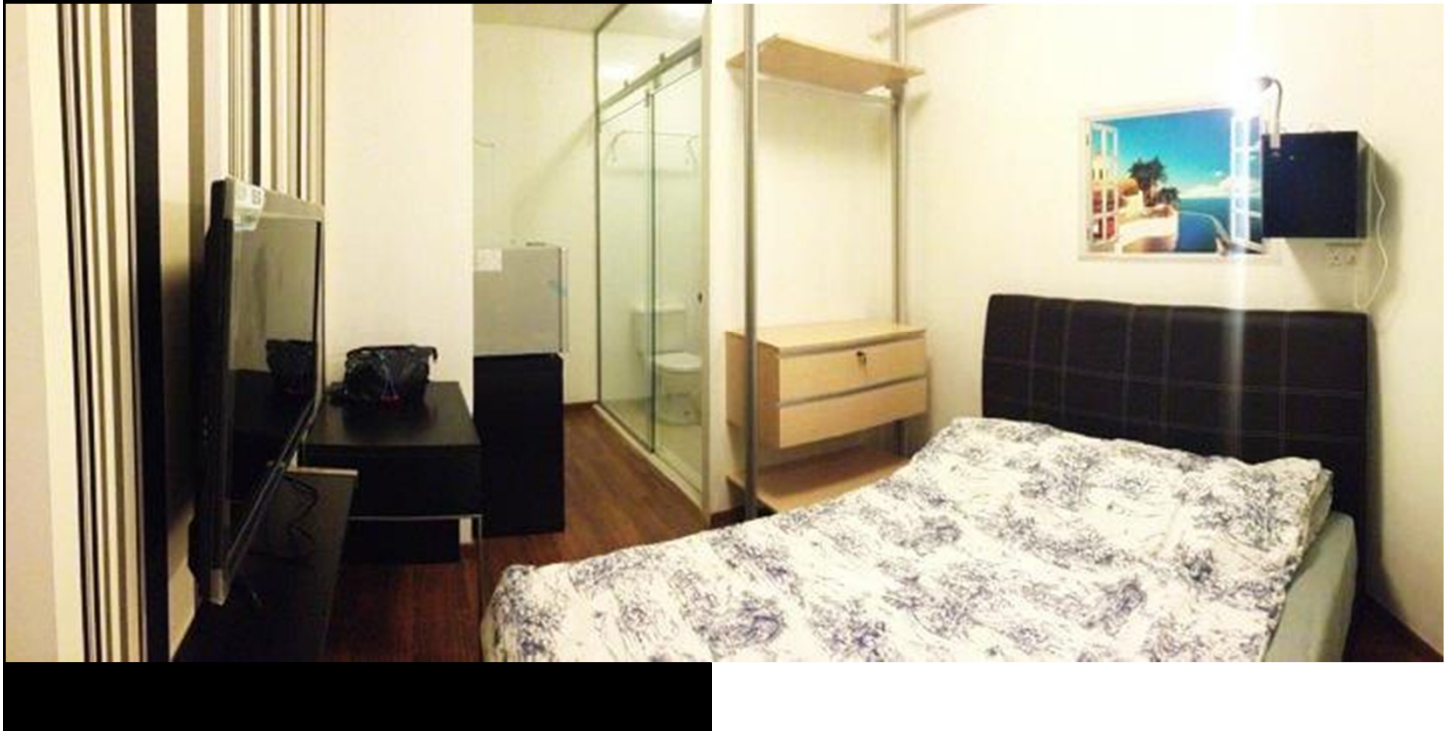
The newly renovated room is furnished with Queen size bed, private attached bathroom, self controlled air conditioning. 32" LED TV, modern wardrobe and kettle

Rates are inclusive of free wifi, cabled channels, housekeeping, bed linen, toiletries and bottled water.





[www.plush-pods.com](http://www.plush-pods.com)



IT BEGINS HERE  
PLUSH PODS

## Deluxe Room (Single/Twin Sharing)

The newly renovated room is furnished with Queen size bed, private attached bathroom, self controlled air conditioning, 32" LED TV, minibar, kettle, desk and modern wardrobe.

Rates are inclusive of free wifi, cabled channels, housekeeping, bed linen, toiletries and bottled water.

Additional bed option available at \$30.

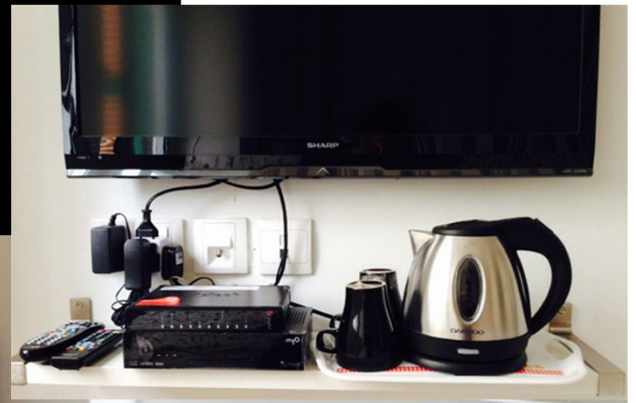


## Premium Room (Triple Sharing)

The newly renovated room is furnished with 1 queen size bed & 1 single size bed, complete with private attached bathroom, self controlled air conditioning, 32" LED TV, modern wardrobe and kettle. Rates are inclusive of free wifi, cabled channels, housekeeping, bed linen, toiletries and bottled water.



[www.plush-pods.com](http://www.plush-pods.com)





## FAMILY ROOM -(Quad Sharing)

**P**  
IT BEGINS HERE  
PLUSH PODS

The room is cosy and private ideal for group of 4 pax. Completes with self-controlled air conditioning, 2 queen size beds, private attached bathroom, 32" wall mounted LED TV and modern wardrobe. Rates are inclusive of free wifi and cabled channels, free bed linen, towel, toiletries and bottled water.



[www.plush-pods.com](http://www.plush-pods.com)

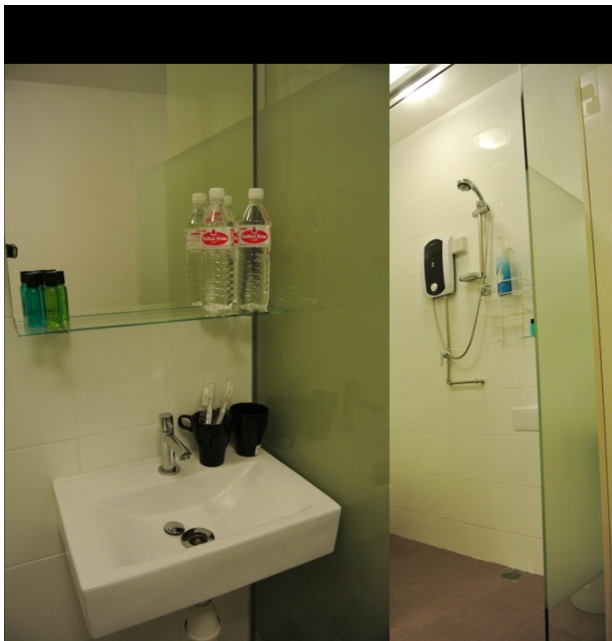


## PRIVATE ROOM (TATAMI ROOM) - Group of 5-6 Pax

The room is cosy and private ideal for groups and family.

Completes with self-controlled air conditioning, Japanese tatami style foldable mattress and shared bathroom close to the room.

Rates are inclusive of free wifi, bed linen and free breakfast.



**SHARED BATHROOM**



[www.plush-pods.com](http://www.plush-pods.com)

[Click here to Submit Enquiry](#)